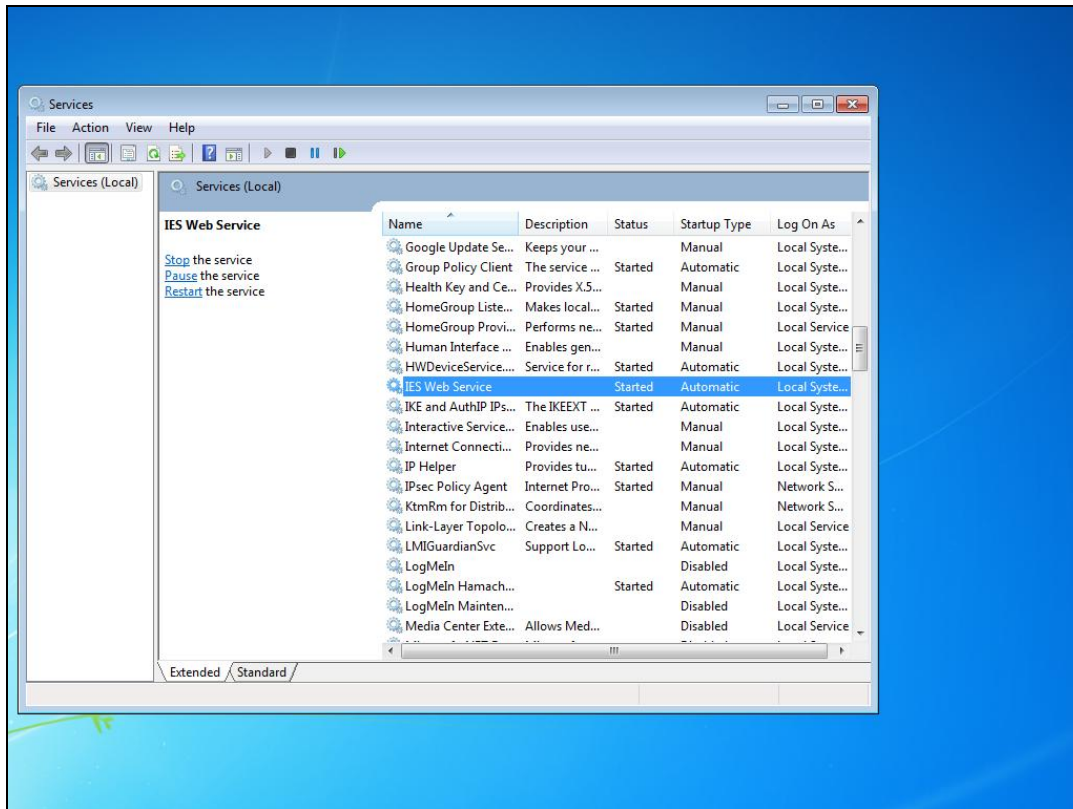


Slide 1

Slide notes: A word of caution about Java updates on a Server where IES Cloud Service is installed. Automatic updates of Java should not be allowed, instead choose the prompt option.



Slide 2

Slide notes: Before performing a Java update on a IES Cloud Service server, we need to stop the IES Web Service first, then perform the Java update, then start the IES Web service again.