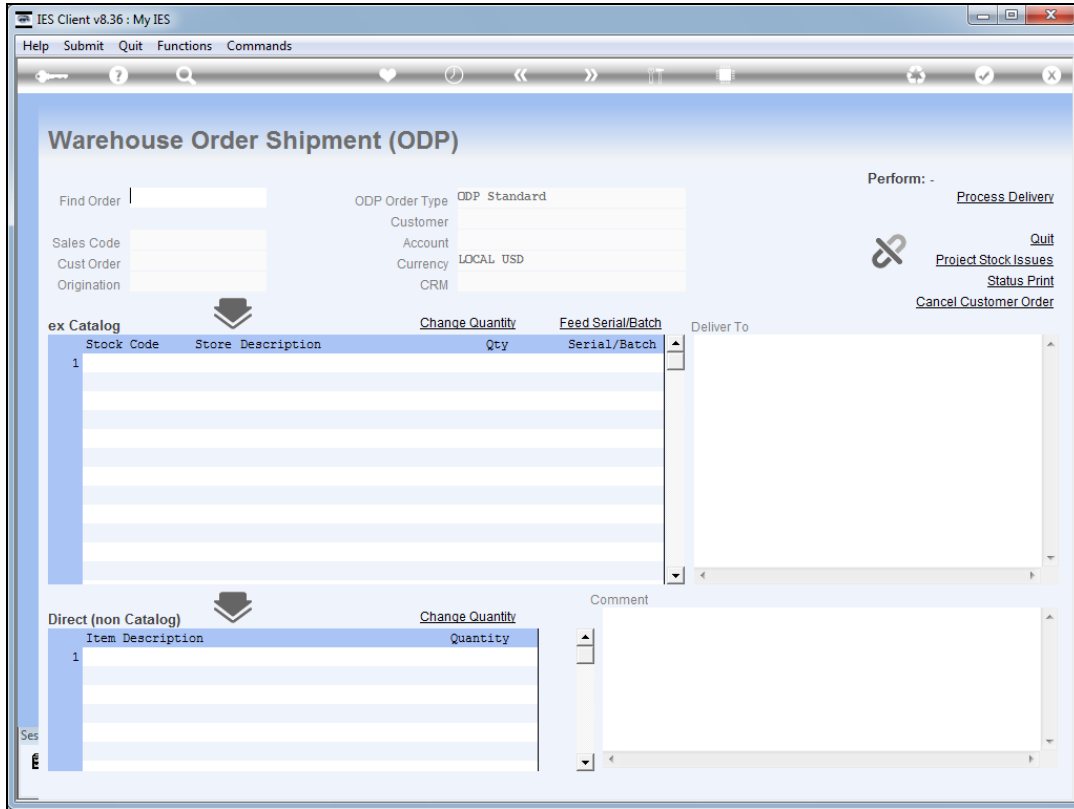


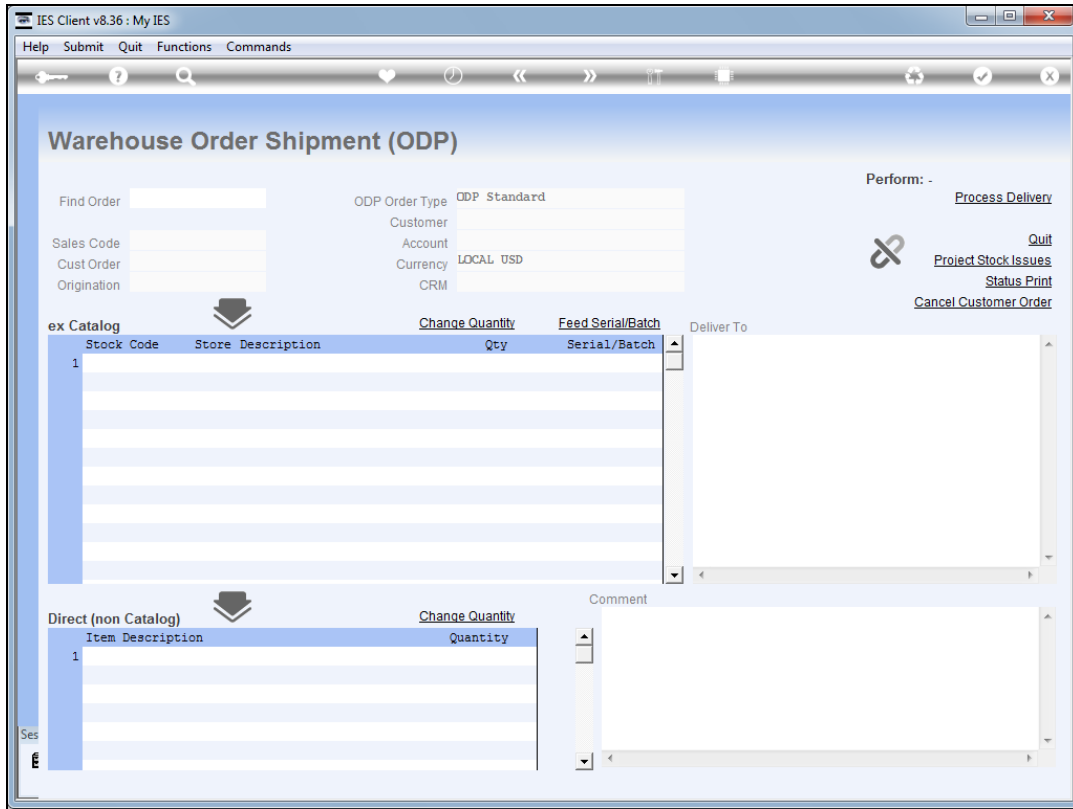
Slide 1

Slide notes: When a Sales Order appears on the 'Ready to Ship' report, that means all Items on the Sales Order has been received and are ready to ship. This is when we do a 'New Delivery Note' to process shipping of the goods.

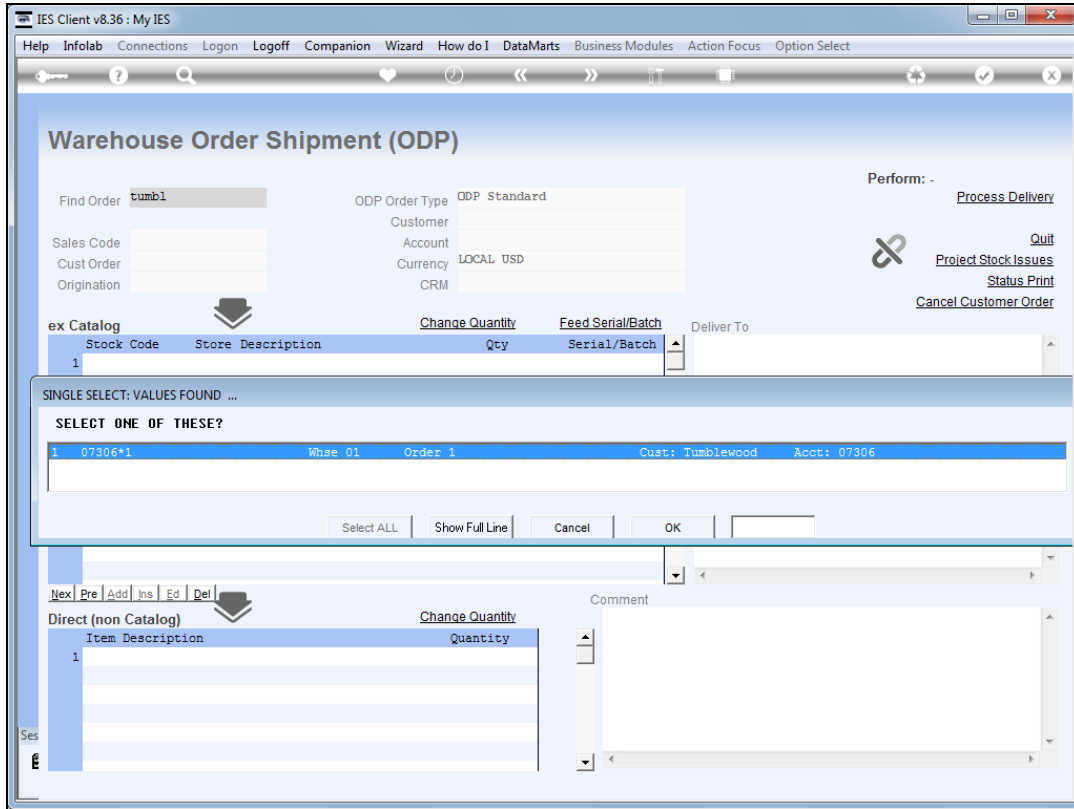


Slide 2

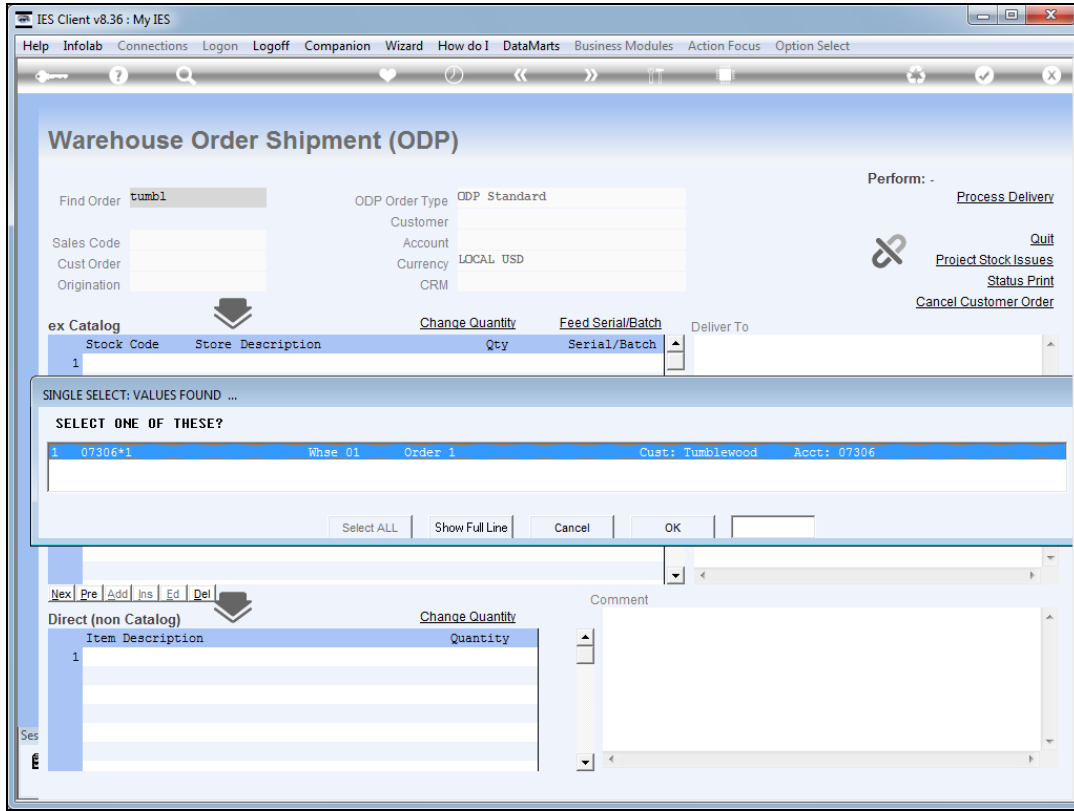
Slide notes: The Order may be retrieved in a number of ways, by typing the order number or part of it, part of the Customer Name, etc.



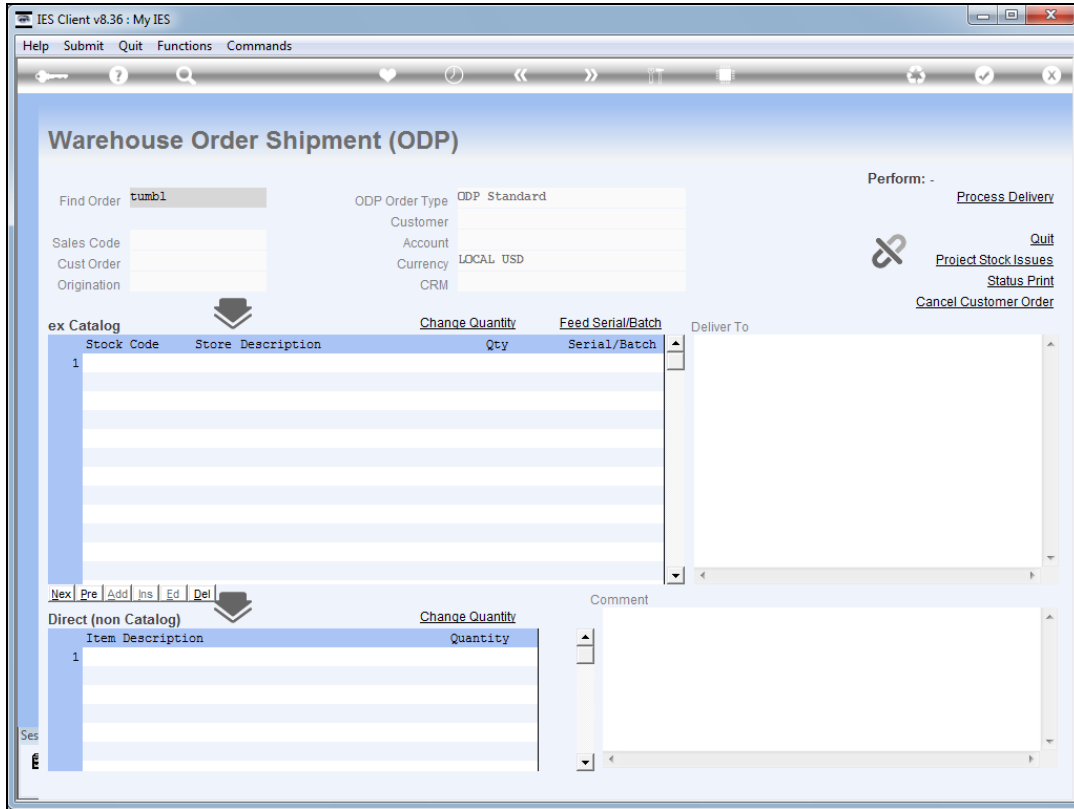
Slide 3
Slide notes:



Slide 4
Slide notes:



Slide 5
Slide notes:



Slide 6
Slide notes:

IES Client v8.36 : My IES

Help Submit Quit Functions Commands

Warehouse Order Shipment (ODP)

Find Order: 07306*1

ODP Order Type: ODP Standard

Customer: Tumblewood

Sales Code: 02 Ryno

Account: 07306

Cust Order: 1

Currency: LOCAL USD

Origination: 01 Main Store

CRM: 00492

Perform: - [Process Delivery](#)

[Quit](#)

[Project Stock Issues](#)

[Status Print](#)

[Cancel Customer Order](#)

Deliver To: 11413 - 1263 STREET
Suneria

ex Catalog	Stock Code	Store	Description	Qty	Serial/Batch
	1	3008478	01 OLYMPUS L1-10B BATTERY	10.00	
	2	0150021	01 OLYMPUS STYLUS ZOOM 120 QD	5.00	
	3	3022131	01 OLYMPUS P400 PA4NE A4 PAPER	5.00	
	4	3008064	01 OLYMPUS STYLUS 410 DIGITAL	10.00	
	5	0150019	01 OLYMPUS STYLUS ZOOM 105 QD	2.00	
	6	3022132	01 OLYMPUS P400 GLOSSY RIBBON	10.00	
	7	3007174	01 NIKON COOLPIX 8800	3.00	
	8	3007230	01 NIKON EN-EL1 BATTERY	12.00	
	9	0243140	01 NIKON SB-800 FLASH	5.00	
	10	0243138	01 NIKON SB-600 FLASH	10.00	
	11	3022308	01 CANON PLUS 8.5x11 20 GLOSSY	2.00	
	12	3022300	01 CANON MATTE 8.5x11 50	12.00	

Change Quantity

Feed Serial/Batch

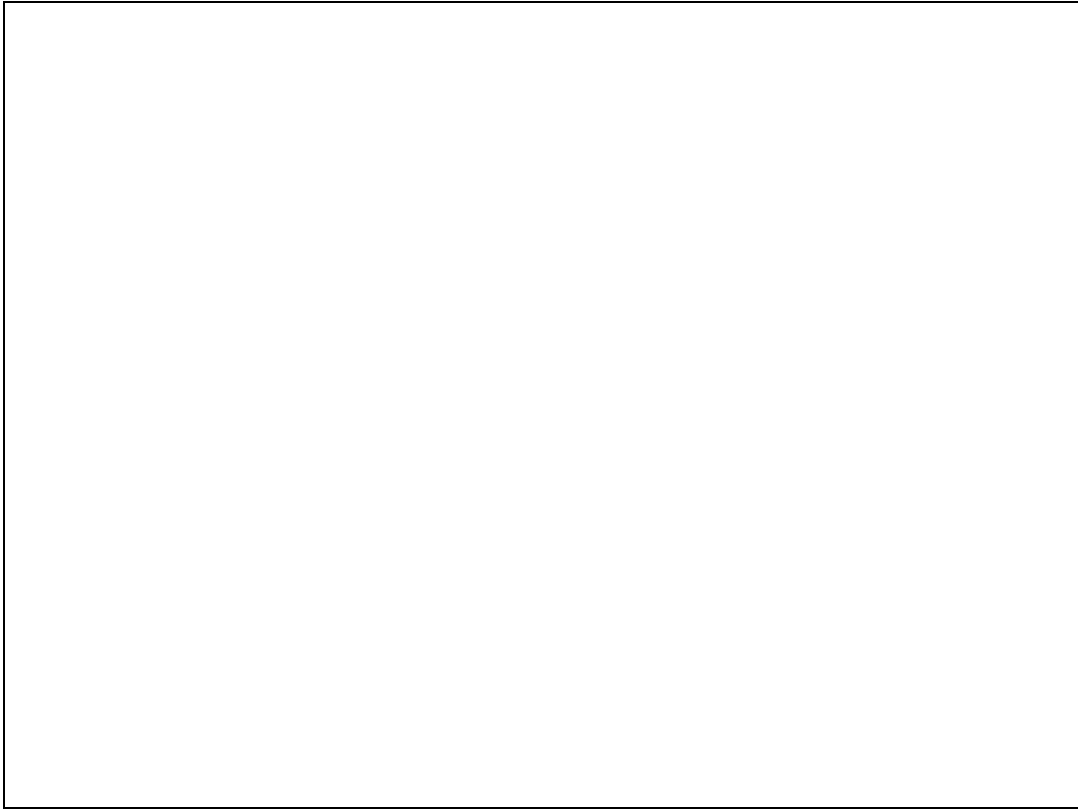
Direct (non Catalog)

Item Description	Quantity
1	

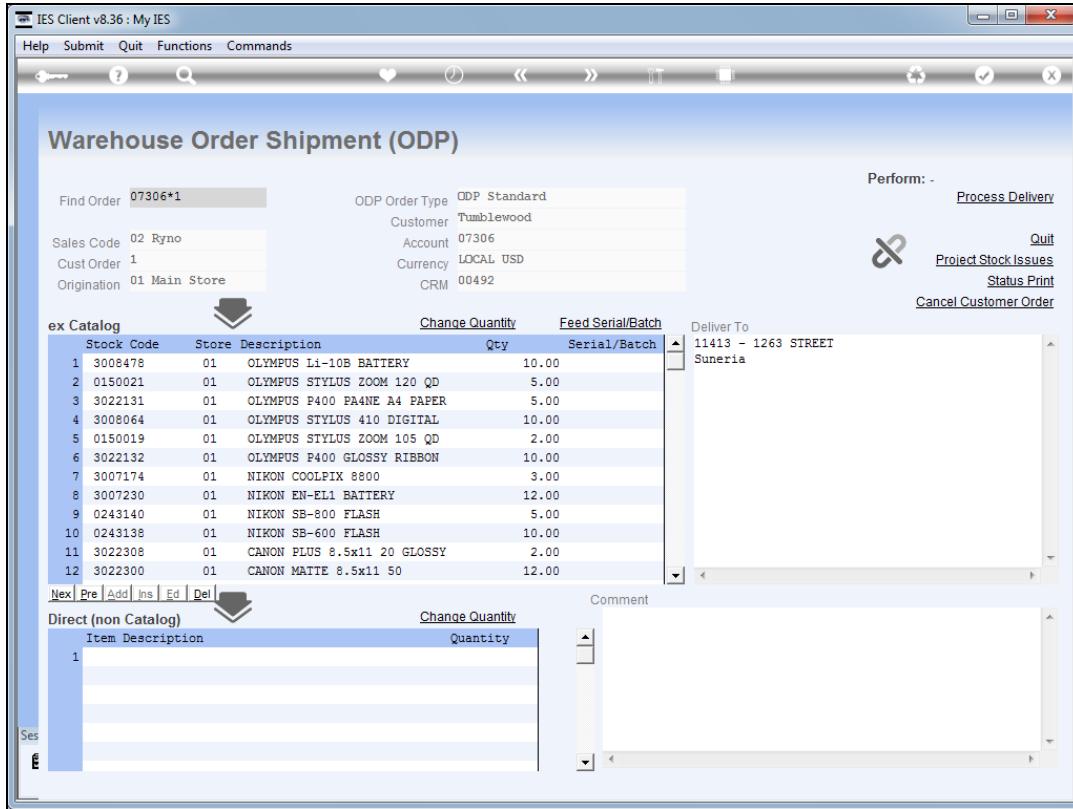
Comment

Ses

Slide 7
Slide notes:

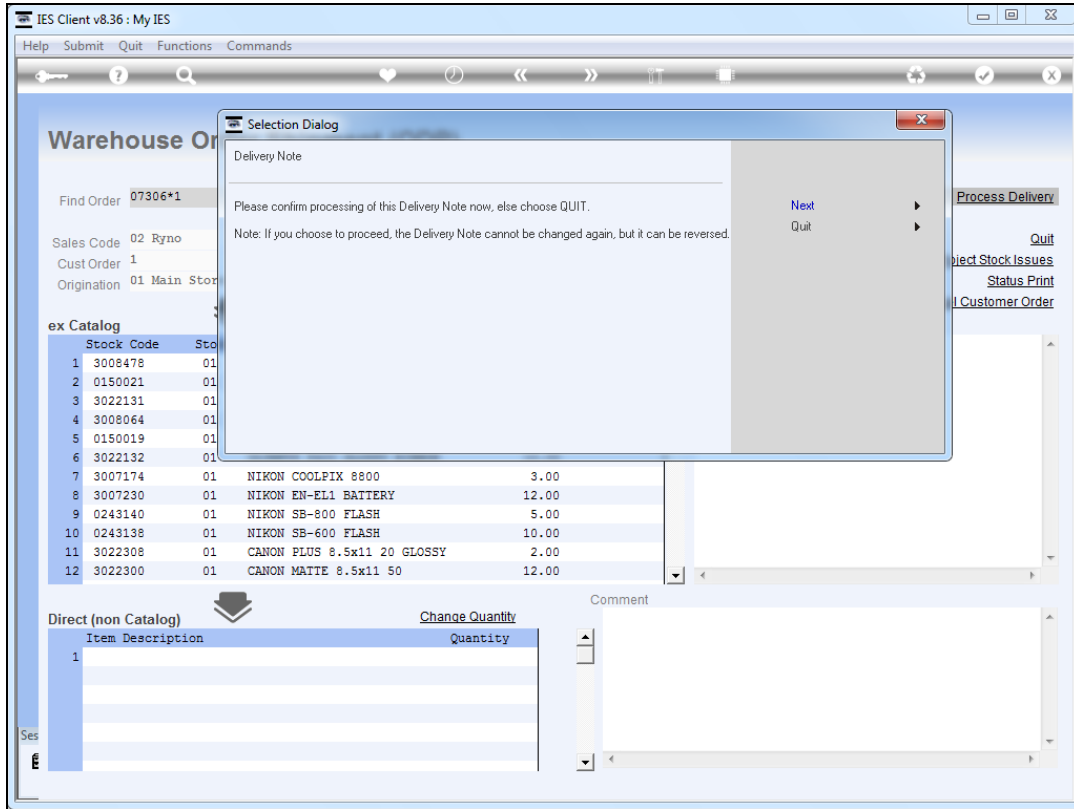


Slide 8
Slide notes:



Slide 9

Slide notes: We will choose 'Process Delivery' to finalize processing of the Delivery Note.



Slide 10
Slide notes:

IES Client v8.36 : My IES

Help Submit Quit Functions Commands

Warehouse Order Shipment (ODP)

Find Order: 07306*1

ODP Order Type: ODP Standard

Customer: Tumblewood

Sales Code: 02 Ryno

Account: 07306

Cust Order: 1

Currency: LOCAL USD

Origination: 01 Main Store

CRM: 00492

Perform: -

- Process Delivery
- Quit
- Project Stock Issues
- Status Print
- Cancel Customer Order

ex Catalog

	Stock Code	Store	Description	Qty	Serial/Batch
1	3008478	01	OLYMPUS L1-10B BATTERY	10.00	
2	0150021	01	OLYMPUS STYLUS ZOOM 120 QD	5.00	
3	3022131	01	OLYMPUS P400 PA4NE A4 PAPER	5.00	
4	3008064	01	OLYMPUS STYLUS 410 DIGITAL	10.00	
5	0150019	01	OLYMPUS STYLUS ZOOM 105 QD	2.00	
6	3022132	01	OLYMPUS P400 GLOSSY RIBBON	10.00	
7	3007174	01	NIKON COOLPIX 8800	3.00	
8	3007230	01	NIKON EN-EL1 BATTERY	12.00	
9	0243140	01	NIKON SB-800 FLASH	5.00	
10	0243138	01	NIKON SB-600 FLASH	10.00	
11	3022308	01	CANON PLUS 8.5x11 20 GLOSSY	2.00	
12	3022300	01	CANON MATTE 8.5x11 50	12.00	

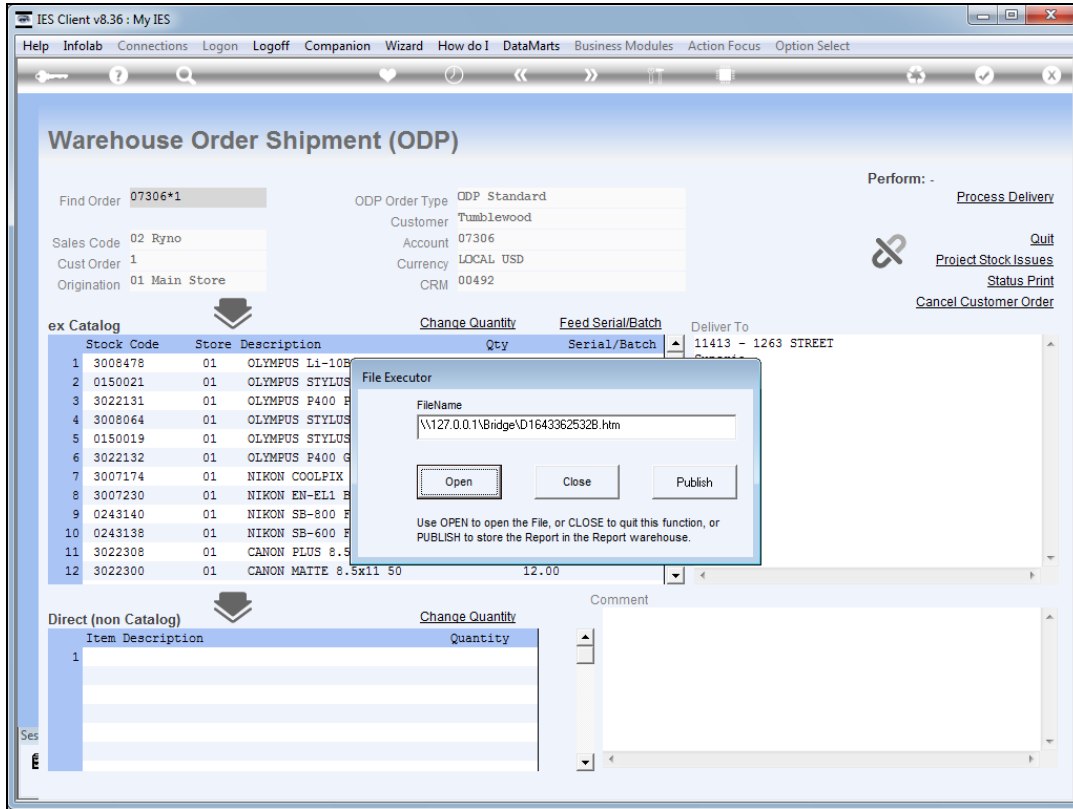
Deliver To: 11413 - 1263 STREET, Suneria

Direct (non Catalog)

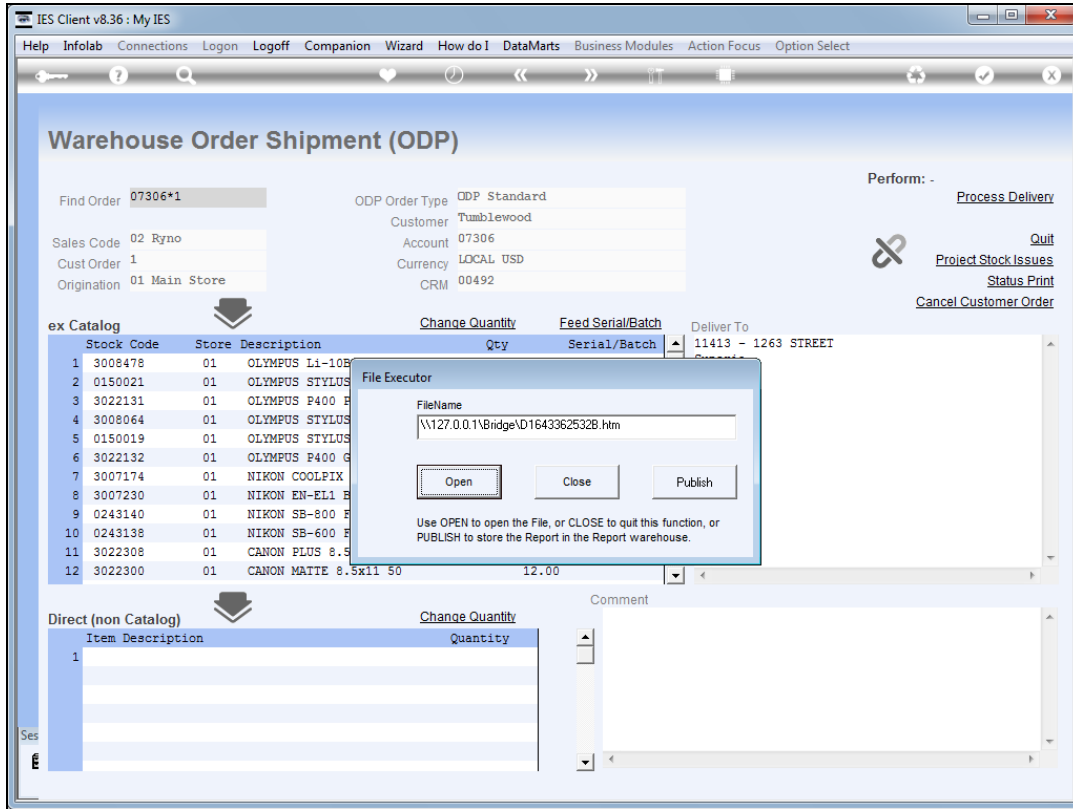
Item	Description	Quantity
1		

Comment

Slide 11
Slide notes:



Slide 12
Slide notes:



Slide 13
Slide notes:

The Export Co
Tel 555-5460
12411 Sky Boulevard Blue Hills

Delivery Note 001 dated 27/12/2012 [Document 1643362521].
Customer Order Number: 1

07306 Tumblewood
11413 - 1263 STREET
Suneria

Description	Item	Quantity
27/12/2012 OLYMPUS Li-10B BATTERY	3008478	10
27/12/2012 OLYMPUS STYLUS ZOOM 120 QD KIT	0150021	5
27/12/2012 OLYMPUS P400 PA4NE A4 PAPER 100	3022131	5
27/12/2012 OLYMPUS STYLUS 410 DIGITAL	3008064	10
27/12/2012 OLYMPUS STYLUS ZOOM 105 QD KIT	0150019	2
27/12/2012 OLYMPUS P400 GLOSSY RIBBON 50	3022132	10
27/12/2012 NIKON COOLPIX 8800	3007174	3
27/12/2012 NIKON EH-EL1 BATTERY	3007230	12
27/12/2012 NIKON SB-800 FLASH	0243140	5
27/12/2012 NIKON SB-600 FLASH	0243138	10
27/12/2012 CANON PLUS 8.5x11 20 GLOSSY	3022308	2
27/12/2012 CANON MATTE 8.5x11 50	3022300	12
27/12/2012 CANON BP-511/S14 LITH-ION BATTER	3104290	20
27/12/2012 CANON A95 DIGITAL	3002096	10
27/12/2012 CANON BCI-6PM PHOTO MAGENTA INK	3022265	20

Slide 14

Slide notes: A Delivery Note is also printed to accompany the delivery of goods.

The Export Co
Tel 555-5460
12411 Sky Boulevard Blue Hills

Delivery Note 001 dated 27/12/2012 [Document 1643362521],
Customer Order Number: 1

07306 Tumblewood
11413 - 1263 STREET
Suneria

Description	Item	Quantity
27/12/2012 OLYMPUS Li-10B BATTERY	3008478	10
27/12/2012 OLYMPUS STYLUS ZOOM 120 QD KIT	0150021	5
27/12/2012 OLYMPUS P400 PA4NE A4 PAPER 100	3022131	5
27/12/2012 OLYMPUS STYLUS 410 DIGITAL	3008064	10
27/12/2012 OLYMPUS STYLUS ZOOM 105 QD KIT	0150019	2
27/12/2012 OLYMPUS P400 GLOSSY RIBBON 50	3022132	10
27/12/2012 NIKON COOLPIX 8800	3007174	3
27/12/2012 NIKON EH-EL1 BATTERY	3007230	12
27/12/2012 NIKON SB-800 FLASH	0243140	5
27/12/2012 NIKON SB-600 FLASH	0243138	10
27/12/2012 CANON PLUS 8.5x11 20 GLOSSY	3022308	2
27/12/2012 CANON MATTE 8.5x11 50	3022300	12
27/12/2012 CANON BP-511/S14 LITH-ION BATTER	3104290	20
27/12/2012 CANON A95 DIGITAL	3002096	10
27/12/2012 CANON BCI-6PM PHOTO MAGENTA INK	3022265	20

Slide 15
Slide notes: